

APPLICATION AND COMMENTARY

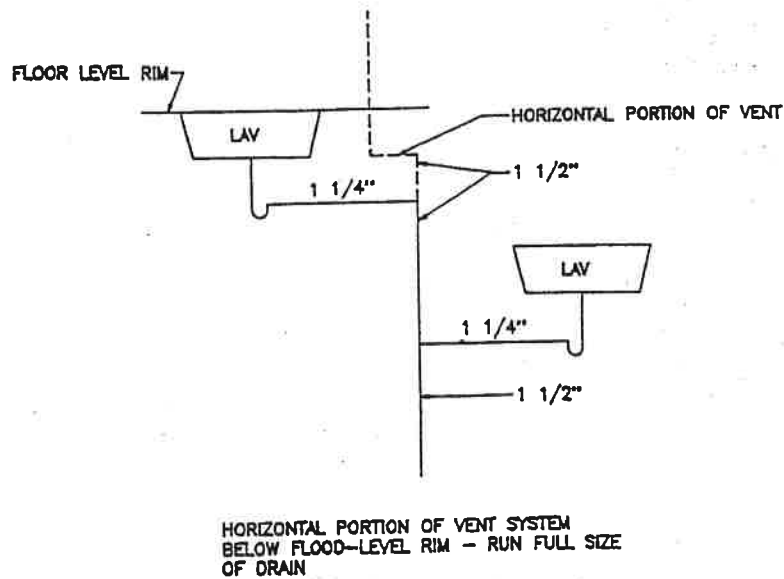


Figure No. 2207.7
HORIZONTAL VENT BELOW FLOOD-LEVEL RIM

P-2207.8 Wet venting: See the illustrative example of a drain, waste and vent system at the end of this commentary chapter.

P-2207.8.1 Single-bathroom groups

P-2207.8.2 Double-bathroom groups

P-2207.8.3 Location of water closet connection controlling dry vent size

P-2207.8.4 Waste stack serving a kitchen group

P-2207.9 Stack venting

P-2207.9.1 General

P-2207.9.2 Method of connection

P-2207.9.3 Stack system sizing

P-2207.9.4 Load limit for stack-vented waste fixtures above highest water closet, bathtub or shower

P-2207.10 Individual fixture vents not required on a neutral horizontal branch: See the illustrative example of a drain, waste and vent system at the end of this commentary chapter.

P-2207.11 Sump vent sizes and lengths

P-2207.12 Sizing

SECTION P-2208 — TESTING THE DRAINAGE, WASTE AND VENT SYSTEM

P-2208.1 Method of testing building sewers